

Results Footprint



EQUATORIAL GUINEA



Malabo

12 October 1968

CFA franc

■ Knowledge Management

■ Human Capital and Institutions Development

■ Environmental Sustainability

■ Industrialisation

■ Technology, Innovation & Digitalisation

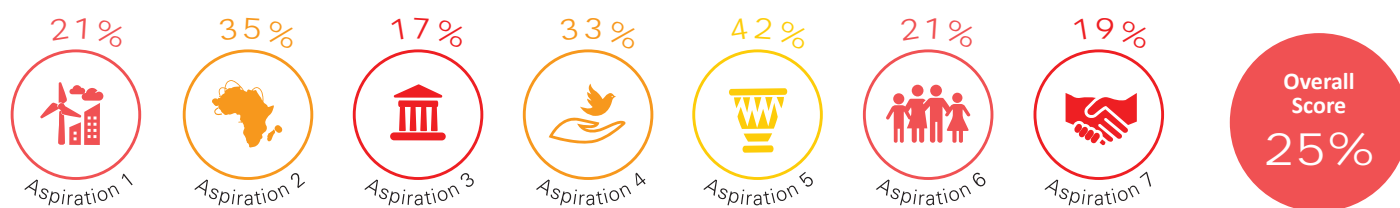
■ Economic Integration

Launch of Integrated Irrigation and Agri-Industry Initiative

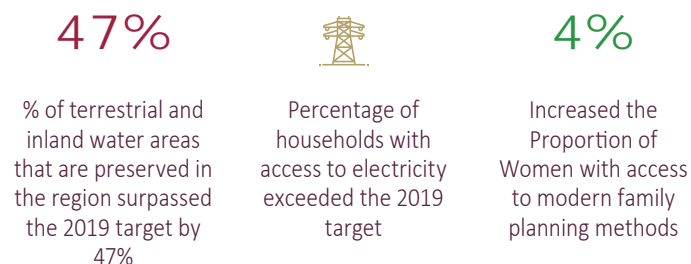
16 countries, including Equatorial Guinea, will be supported to operationalise programmes at field level. The initiative aims to foster public-private collaboration along the agriculture and food systems value chain.

Central Africa Dashboard on Implementation of Agenda 2063

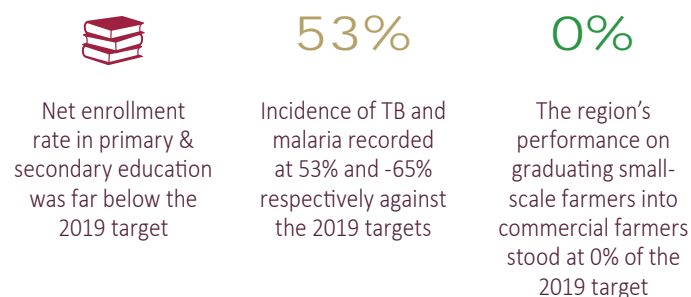
Performance Assessment



Areas where significant progress has been made



Areas where progress has been slow



Areas of Support to Accelerate Implementation of Agenda 2063



Performance on Goals

A High Standard of Living, Quality of Life and Well Being for All	50%
Well Educated Citizens and Skills revolution underpinned by Science, Technology and Innovation	36%
Healthy and Well-Nourished Citizens	49%
Transformed Economies and Job Creation	27%
Modern Agriculture for increased productivity	2%
Blue/ ocean economy for accelerated econ. growth	14%
Environmentally sustainable climate resilient economies and communities	31%
United Africa (Federal or Confederate)	34%
Key Continental Financial and Monetary Institutions established and functional	91%
World Class Infrastructure criss-crosses Africa	35%
Democratic values, practices, universal principles of human rights, justice and the rule of law entrenched	29%
Capable institutions and transformed leadership in place at all levels	17%
Peace, Security and Stability are preserved	33%
A Stable and Peaceful Africa	67%
A Fully Functional and Operational African Peace and Security Architecture	83%
African Cultural Renaissance is pre-eminent	28%
Full Gender Equality in All Spheres of Life	63%
Engaged and Empowered Youth and Children	23%
Africa as a major partner in global affairs and peaceful co-existence	66%
Africa takes full responsibility for financing her development	25%

